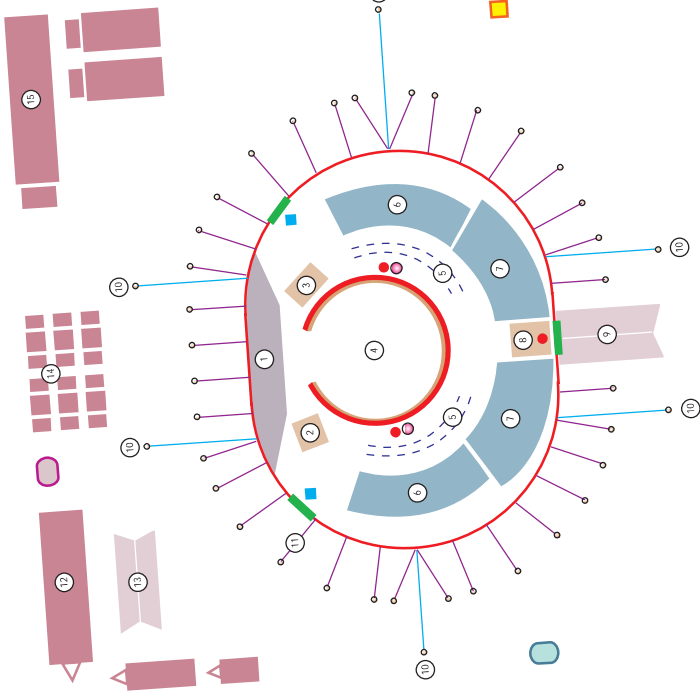


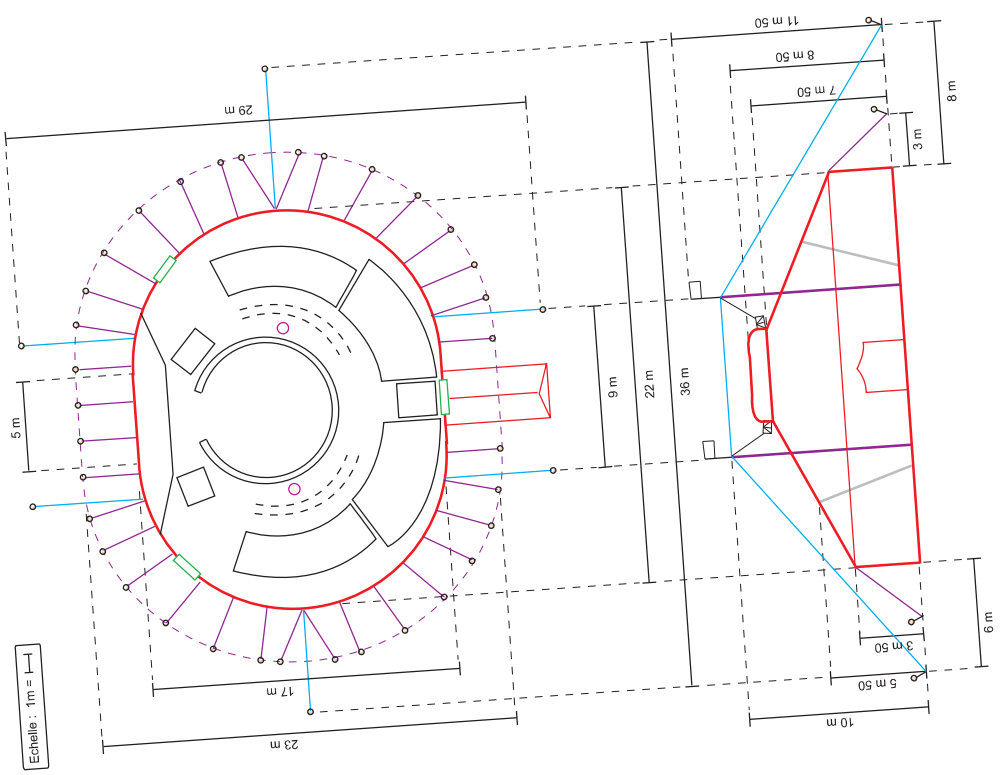
# Plans du chapiteau

Echelle : 1m = 1cm



|                   |                   |                      |                    |
|-------------------|-------------------|----------------------|--------------------|
| 1 Gardine         | 7 Gradins 7 rangs | 13 Barnum cuisine    | Sorties de secours |
| 2 Comédien        | 8 Technique       | 14 Parking voitures  | Blocs de secours   |
| 3 Musiciens       | 9 Barnum entrée   | 15 Parking camions   | Extincteurs        |
| 4 Piste           | 10 Haubans        | Mâts                 | Branchement EDF    |
| 5 Chaises         | 11 Tour de pincés | 12 Parking caravanes | WC compagnie       |
| 6 Gradins 5 rangs |                   |                      | WC public          |

Surface totale = 1 29 m x L 36 m x h 11,50 m  
 Taille chapiteau = 1 17 m x L 22 m  
 Partie plate = 5 m



Echelle : 1m = 1cm